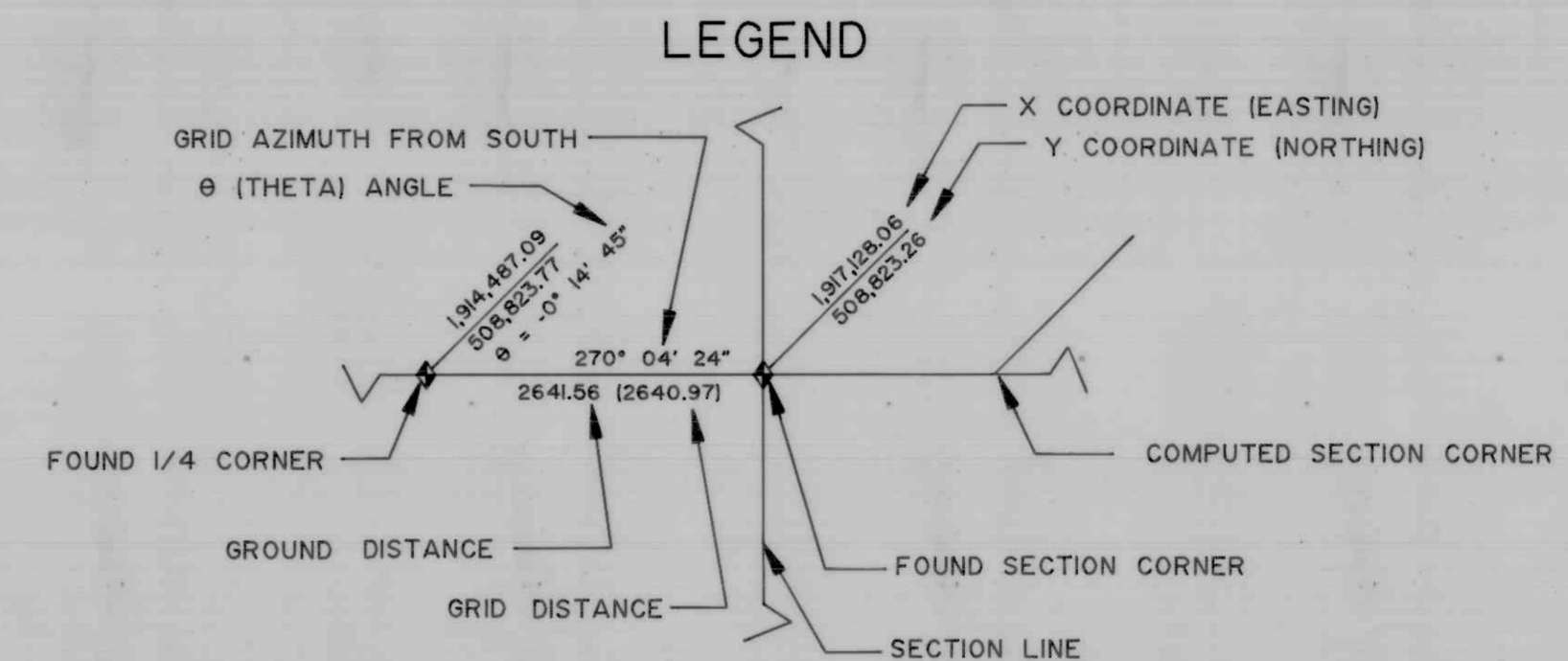


STATE COORDINATE
&
DEPENDENT RESURVEY
OF A PORTION OF
TOWNSHIP 12 NORTH, RANGE 1 WEST
Salt Lake Base and Meridian

ALL AZIMUTHS AND COORDINATES SHOWN ARE BASED ON THE UTAH STATE COORDINATE SYSTEM, LAMBERT CONFORMAL PROJECTION, UTAH NORTH ZONE, NORTH AMERICAN 1927 DATUM.
METHODS AND SPECIFICATIONS CONFORM TO SP 235, THE UTAH STATE COORDINATE SYSTEM, AND THE UNITED STATES COAST AND GEODETIC SURVEY.
THE COORDINATES SHOWN WERE TRANSFERRED BY TRAVERSE OR TRIANGULATION FROM THE FOLLOWING UNITED STATES COAST AND GEODETIC SURVEY STATIONS: CROW, CURVE, LOGAN AIRPORT, AND NEWTON



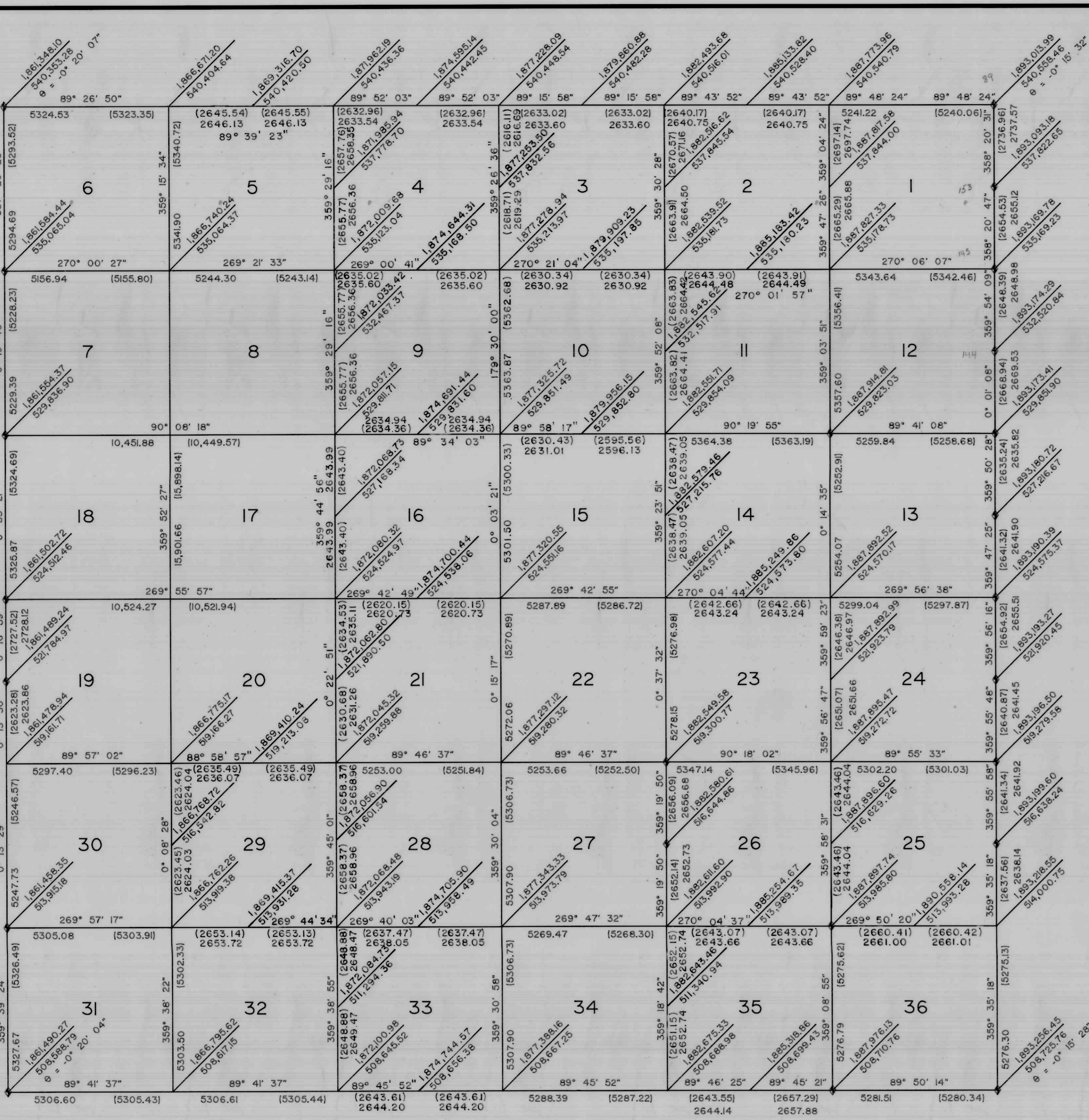
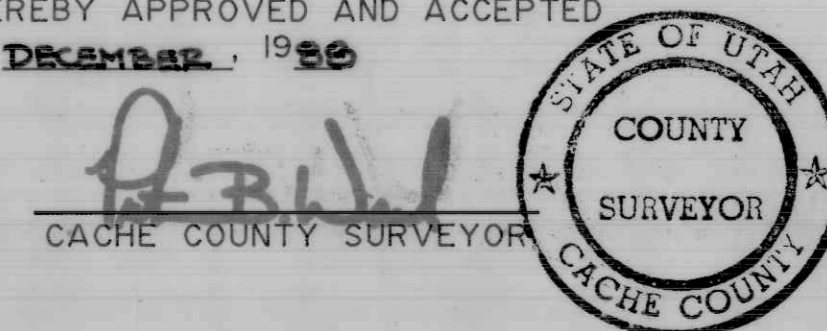
SECTION TIES, ORIGINAL GENERAL LAND OFFICE OR BUREAU OF LAND MANAGEMENT SURVEY NOTES, TRAVERSES, CALCULATIONS, TIES TO TRAVERSE POINTS, ETC. USED IN OBTAINING THIS INFORMATION ARE AVAILABLE IN THE CACHE COUNTY SURVEYOR'S OFFICE.

ALL SECTION CORNERS WERE ESTABLISHED AND VERIFIED PRIOR TO RESURVEY WORK ACCORDING TO THE RULES ESTABLISHED BY THE BUREAU OF LAND MANAGEMENT.

GRID AZIMUTHS AND DISTANCES BETWEEN CORNERS NOT SET ARE FOR REFERENCE ONLY.

OFFICE OF THE CACHE COUNTY SURVEYOR

THE INFORMATION SHOWN ON THIS PLAT IS IN STRICT CONFORMITY TO THE FIELD NOTES ON FILE IN THE OFFICE OF THE COUNTY SURVEYOR, HAVING BEEN EXECUTED IN ACCORDANCE WITH THE REQUIREMENTS OF THIS OFFICE, AND THIS PLAT IS HEREBY APPROVED AND ACCEPTED THIS 6 DAY OF DECEMBER, 1989



REVISIONS & ADDITIONS

NO	DATE	BY	NOTES	APPROVED
1	7/20/89	DHM	ADDED COORDINATES FOR 1/4 CORNERS AND REVISED DATA BASED ON EVIDENCE RECOVERED WHEN CORNERS WERE MONUMENTED	

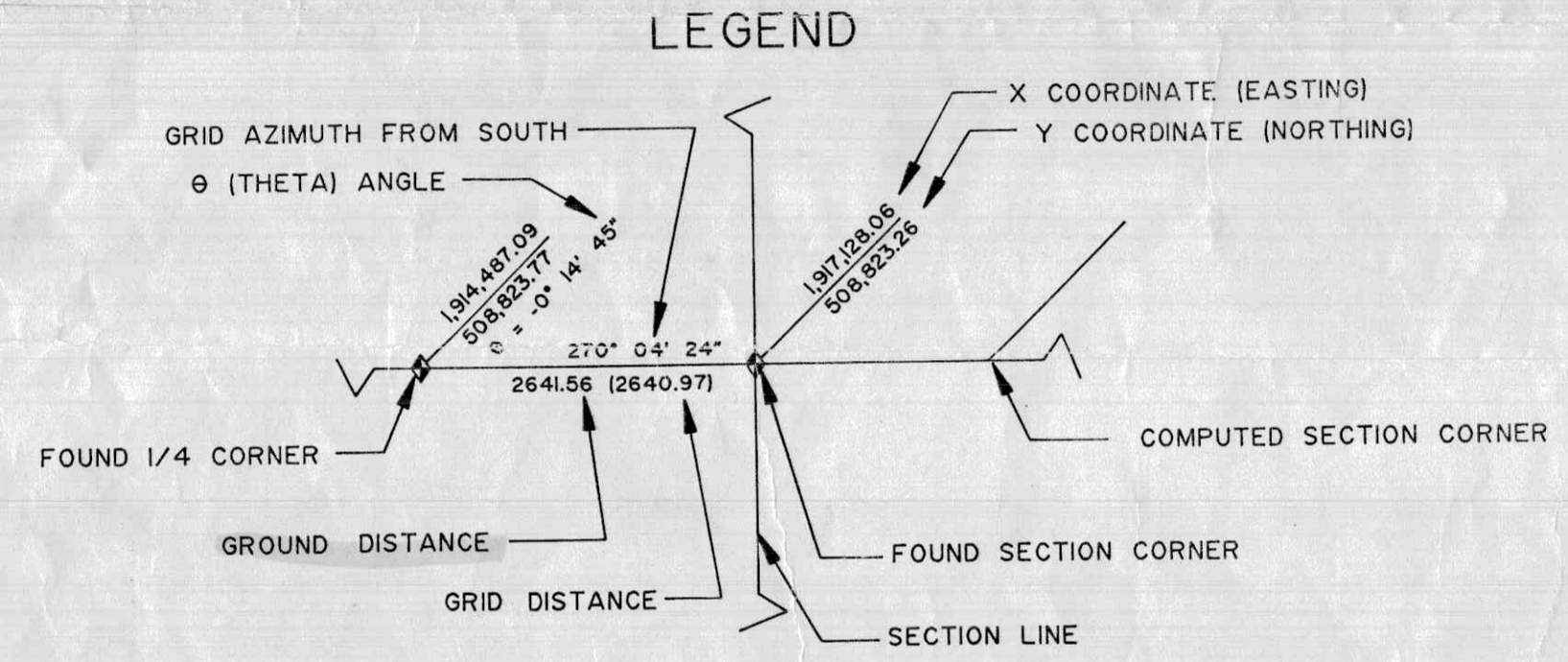
NOTES

- GEODETTIC AZIMUTH = GRID AZIMUTH + θ
- θ = ANGLE BETWEEN GRID NORTH AND GEODETTIC MERIDIAN
- GRID DISTANCE \times 1.00022135 = GROUND DISTANCE
- ♦ FOUND CORNER

T12N-R1W

STATE COORDINATE
&
DEPENDENT RESURVEY
OF A PORTION OF
TOWNSHIP 12 NORTH, RANGE 1 WEST
Salt Lake Base and Meridian

ALL AZIMUTHS AND COORDINATES SHOWN ARE BASED ON THE UTAH STATE COORDINATE SYSTEM, LAMBERT CONFORMAL PROJECTION, UTAH NORTH ZONE, NORTH AMERICAN 1927 DATUM.
METHODS AND SPECIFICATIONS CONFORM TO SP 235, THE UTAH STATE COORDINATE SYSTEM, AND THE UNITED STATES COAST AND GEODETIC SURVEY.
THE COORDINATES SHOWN WERE TRANSFERRED BY TRAVERSE OR TRIANGULATION FROM THE FOLLOWING UNITED STATES COAST AND GEODETIC SURVEY STATIONS: CROW, CURVE, LOGAN AIRPORT, AND NEWTON



SECTION TIES, ORIGINAL GENERAL LAND OFFICE OR BUREAU OF LAND MANAGEMENT SURVEY NOTES, TRAVERSES, CALCULATIONS, TIES TO TRAVERSE POINTS, ETC. USED IN OBTAINING THIS INFORMATION ARE AVAILABLE IN THE CACHE COUNTY SURVEYOR'S OFFICE.

ALL SECTION CORNERS WERE ESTABLISHED AND VERIFIED PRIOR TO RESURVEY WORK ACCORDING TO THE RULES ESTABLISHED BY THE BUREAU OF LAND MANAGEMENT.

GRID AZIMUTHS AND DISTANCES BETWEEN CORNERS NOT SET ARE FOR REFERENCE ONLY.

OFFICE OF THE CACHE COUNTY SURVEYOR

THE INFORMATION SHOWN ON THIS PLAT IS IN STRICT CONFORMITY TO THE FIELD NOTES ON FILE IN THE OFFICE OF THE COUNTY SURVEYOR, HAVING BEEN EXECUTED IN ACCORDANCE WITH THE REQUIREMENTS OF THIS OFFICE, AND THIS PLAT IS HEREBY APPROVED AND ACCEPTED.
THIS 6 DAY OF DECEMBER, 1980

ABILL
CACHE COUNTY SURVEYOR

NOTES

- GEODETIC AZIMUTH = GRID AZIMUTH + θ
- θ = ANGLE BETWEEN GRID NORTH AND GEODETIC MERIDIAN
- GRID DISTANCE × 1.00022135 = GROUND DISTANCE
- ◆ FOUND CORNER

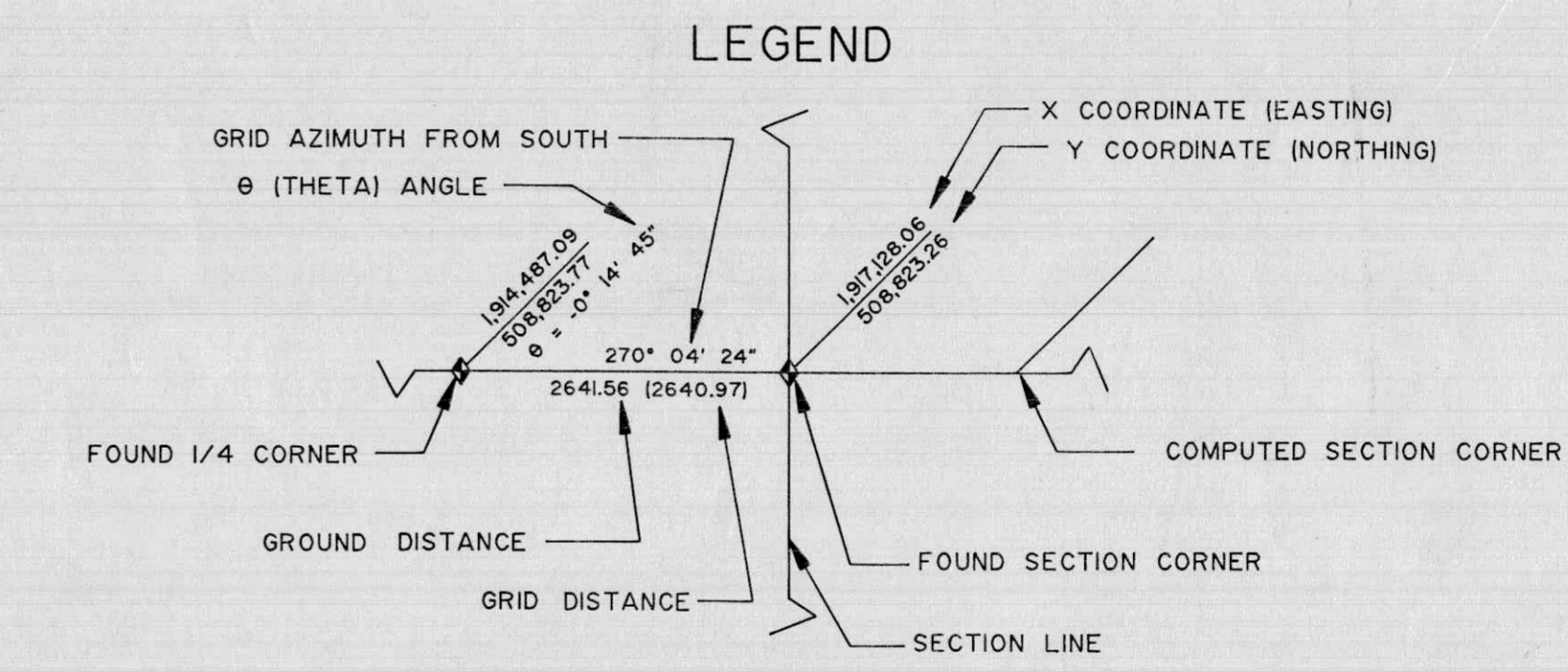
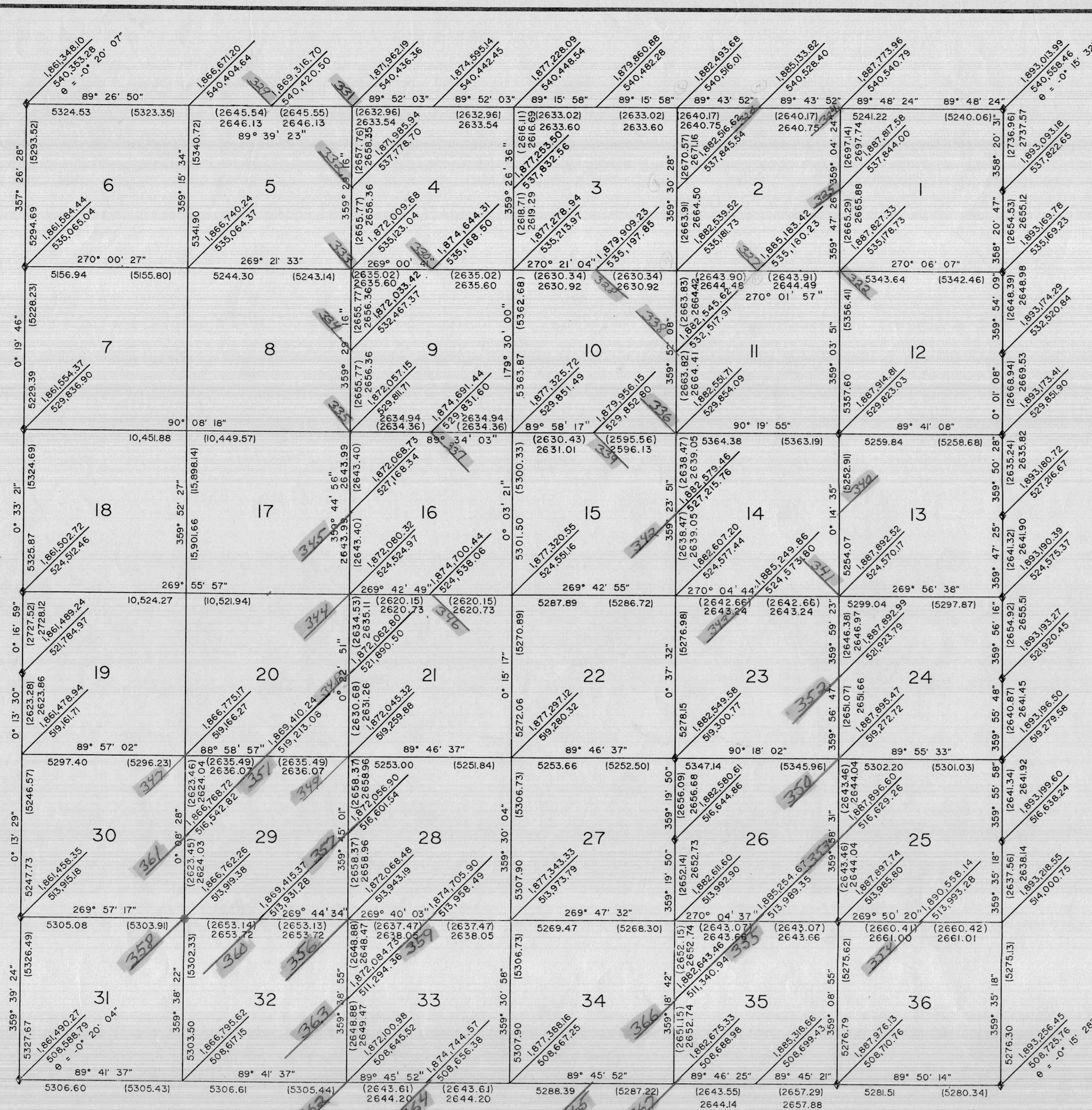
REVISIONS & ADDITIONS

NO	DATE	BY	NOTES	APPROVED
1	7/20/89	DHM	ADDED COORDINATES FOR 1/4 CORNERS AND REVISED DATA BASED ON EVIDENCE RECOVERED WHEN CORNERS WERE MONUMENTED	

30,953.0085

STATE COORDINATE
&
DEPENDENT RESURVEY
OF A PORTION OF
TOWNSHIP 12 NORTH, RANGE 1 WEST
Salt Lake Base and Meridian

ALL AZIMUTHS AND COORDINATES SHOWN ARE BASED ON THE UTAH STATE COORDINATE SYSTEM, LAMBERT CONFORMAL PROJECTION, UTAH NORTH ZONE, NORTH AMERICAN 1927 DATUM.
METHODS AND SPECIFICATIONS CONFORM TO SP 235, THE UTAH STATE COORDINATE SYSTEM, AND THE UNITED STATES COAST AND GEODETIC SURVEY.
THE COORDINATES SHOWN WERE TRANSFERRED BY TRAVERSE OR TRIANGULATION FROM THE FOLLOWING UNITED STATES COAST AND GEODETIC SURVEY STATIONS: CROW, CURVE, LOGAN AIRPORT, AND NEWTON



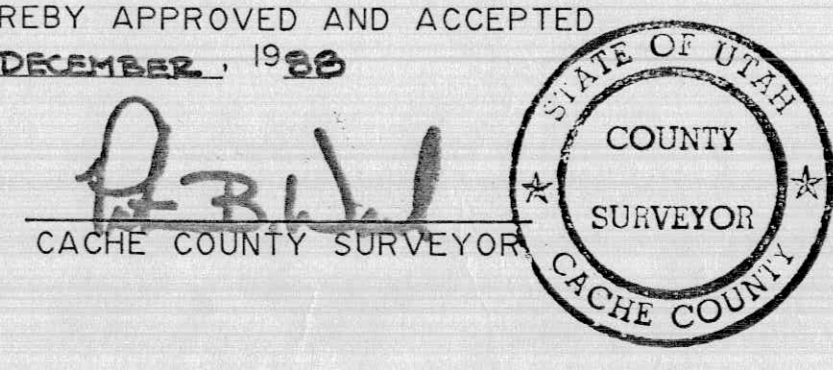
SECTION TIES, ORIGINAL GENERAL LAND OFFICE OR BUREAU OF LAND MANAGEMENT SURVEY NOTES, TRAVERSES, CALCULATIONS, TIES TO TRAVERSE POINTS, ETC. USED IN OBTAINING THIS INFORMATION ARE AVAILABLE IN THE CACHE COUNTY SURVEYOR'S OFFICE.

ALL SECTION CORNERS WERE ESTABLISHED AND VERIFIED PRIOR TO RESURVEY WORK ACCORDING TO THE RULES ESTABLISHED BY THE BUREAU OF LAND MANAGEMENT.

GRID AZIMUTHS AND DISTANCES BETWEEN CORNERS NOT SET ARE FOR REFERENCE ONLY.

OFFICE OF THE CACHE COUNTY SURVEYOR

THE INFORMATION SHOWN ON THIS PLAT IS IN STRICT CONFORMITY TO THE FIELD NOTES ON FILE IN THE OFFICE OF THE COUNTY SURVEYOR, HAVING BEEN EXECUTED IN ACCORDANCE WITH THE REQUIREMENTS OF THIS OFFICE, AND THIS PLAT IS HEREBY APPROVED AND ACCEPTED THIS 6 DAY OF DECEMBER, 1988



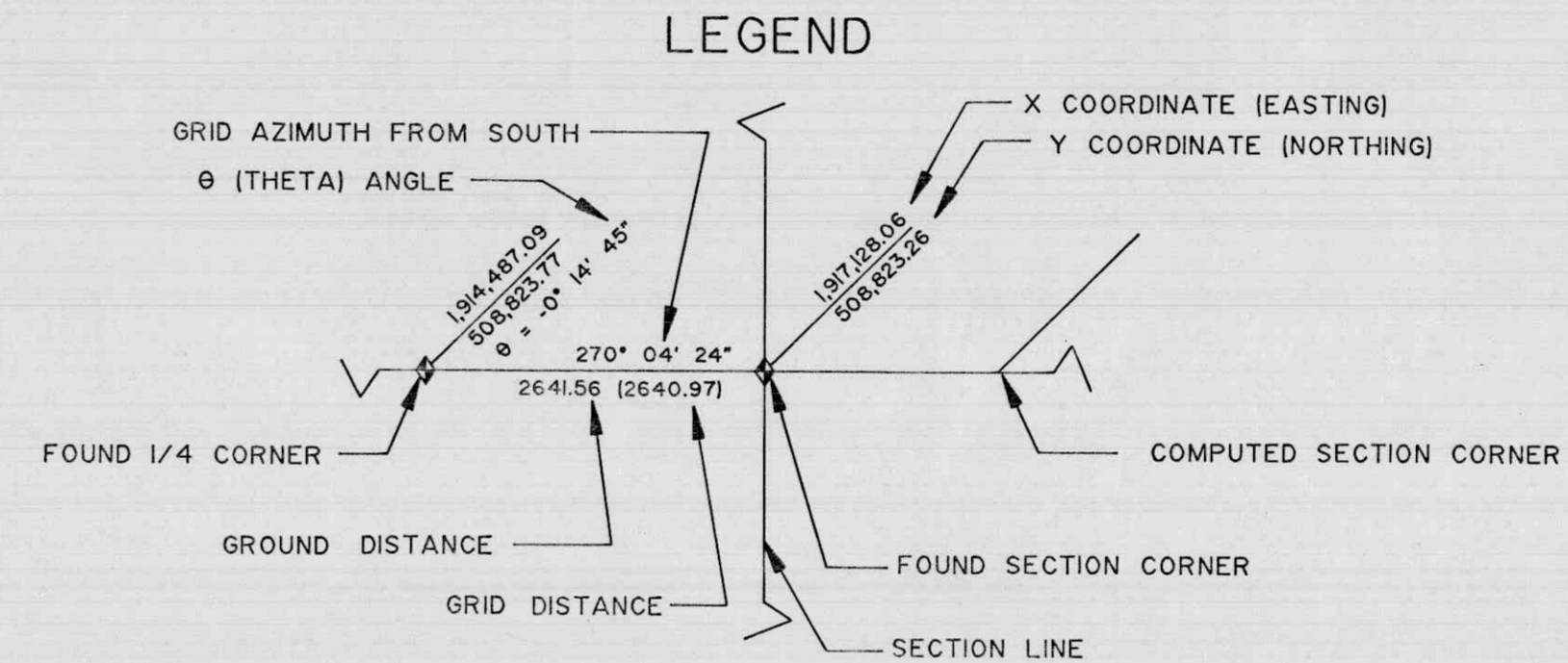
REVISIONS & ADDITIONS				
NO	DATE	BY	NOTES	APPROVED
1	7/20/89	DHM	ADDED COORDINATES FOR 1/4 CORNERS AND REVISED DATA BASED ON EVIDENCE RECOVERED WHEN CORNERS WERE MONUMENTED	

NOTES

- GEODETIC AZIMUTH = GRID AZIMUTH + θ
- θ = ANGLE BETWEEN GRID NORTH AND GEODETIC MERIDIAN
- GRID DISTANCE × 1.00022135 = GROUND DISTANCE
- ◆ FOUND CORNER

STATE COORDINATE
&
DEPENDENT RESURVEY
OF A PORTION OF
TOWNSHIP 12 NORTH, RANGE 1 WEST
Salt Lake Base and Meridian

ALL AZIMUTHS AND COORDINATES SHOWN ARE BASED ON THE UTAH STATE COORDINATE SYSTEM, LAMBERT CONFORMAL PROJECTION, UTAH NORTH ZONE, NORTH AMERICAN 1927 DATUM.
METHODS AND SPECIFICATIONS CONFORM TO SP 235, THE UTAH STATE COORDINATE SYSTEM, AND THE UNITED STATES COAST AND GEODETIC SURVEY.
THE COORDINATES SHOWN WERE TRANSFERRED BY TRAVERSE OR TRIANGULATION FROM THE FOLLOWING UNITED STATES COAST AND GEODETIC SURVEY STATIONS: CROW, CURVE, LOGAN AIRPORT, AND NEWTON



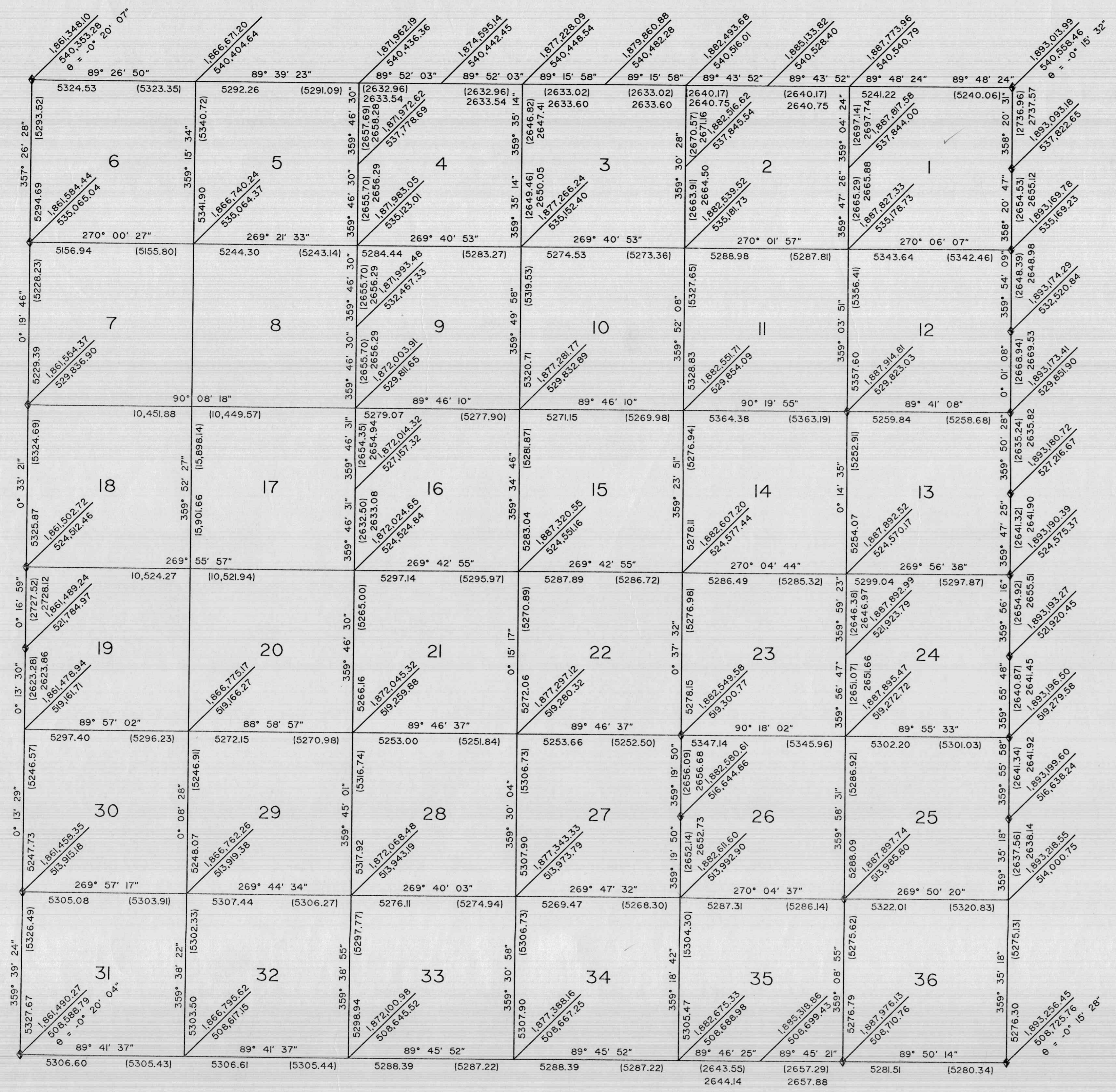
SECTION TIES, ORIGINAL GENERAL LAND OFFICE OR BUREAU OF LAND MANAGEMENT SURVEY NOTES, TRAVERSES, CALCULATIONS, TIES TO TRAVERSE POINTS, ETC. USED IN OBTAINING THIS INFORMATION ARE AVAILABLE IN THE CACHE COUNTY SURVEYOR'S OFFICE.

ALL SECTION CORNERS WERE ESTABLISHED AND VERIFIED PRIOR TO RESURVEY WORK ACCORDING TO THE RULES ESTABLISHED BY THE BUREAU OF LAND MANAGEMENT.

GRID AZIMUTHS AND DISTANCES BETWEEN CORNERS NOT SET ARE FOR REFERENCE ONLY.

OFFICE OF THE CACHE COUNTY SURVEYOR

THE INFORMATION SHOWN ON THIS PLAT IS IN STRICT CONFORMITY TO THE FIELD NOTES ON FILE IN THE OFFICE OF THE COUNTY SURVEYOR, HAVING BEEN EXECUTED IN ACCORDANCE WITH THE REQUIREMENTS OF THIS OFFICE, AND THIS PLAT IS HEREBY APPROVED AND ACCEPTED
THIS 6 DAY OF DECEMBER, 1988



REVISIONS & ADDITIONS				
NO	DATE	BY	NOTES	APPROVED

NOTES

- GEODETIC AZIMUTH = GRID AZIMUTH + θ
- θ = ANGLE BETWEEN GRID NORTH AND GEODETIC MERIDIAN
- GRID DISTANCE × 1.00022135 = GROUND DISTANCE
- ◆ FOUND CORNER